



香港綠色標誌
Hong Kong ECO Mark

Unit D, 14/F., Block 1, Tai Ping Industrial Centre, No. 57 Ting Kok Road, Tai Po, N.T., Hong Kong.

香港 新界 大埔 汀角路 57 號 太平工業中心 第一座 14 樓 D 室

Tel 電話:(+852)2661 2083 Fax 傳真: (+852)2661 3181

網頁 : www.hk-cc.hk 電郵 : hkcc@hk-cc.hk



香港綠色標誌
Hong Kong ECO Mark

**Hong Kong ECO Mark
Furniture**

Scheme No. : CC-SCH-009

Issue Date : 2013-03-01

Revision : 0

Table of Contents

1. INTRODUCTION	1
2. SCOPE.....	1
3. CERTIFICATION MODE.....	1
4. CERTIFICATION – PRE-LICENSE STAGE	2
4.1. APPLICATION TO HONG KONG CERTIFICATION CENTRE.....	2
4.2. PRODUCT CRITERIA	3
4.2.1. WOOD	3
4.2.2. METAL	3
4.2.3. PLASTIC	4
4.2.4. TEXTILES AND LEATHER	5
4.2.5. GLASS	5
4.2.6. CUSTOMER INFORMATION	5
4.3. CHEMICAL TEST	5
4.3.1. <i>Classification of Certification Product</i>	5
4.3.2. <i>Sample preparation</i>	6
4.3.3. <i>Applicable Testing Standards</i>	6
4.3.4. <i>Hazardous substance</i>	6
4.4. INITIAL FACTORY EVALUATION.....	10
4.4.1. <i>Factory Inspection – Environmental Aspect Inspection</i>	10
4.4.2. <i>Product Consistency Check</i>	10
4.5. OVERALL REVIEW	11
4.6. ISSUE OF HONG KONG ECO MARK LICENSE	11
4.7. CONTINUAL SURVEILLANCE	12
4.7.1. <i>Routine Inspection Visit</i>	12
5. PRODUCT MODIFICATION.....	12
6. PRODUCT SCOPE EXTENSION.....	13
7. CERTIFICATION SUSPENSION/ CANCELLATION.....	13
8. REGULATIONS FOR CERTIFICATION MARK.....	15
APPENDIX 1 – PRE-LICENSE OVERVIEW WORK FLOW	17
APPENDIX 2 – FACTORY INSPECTION REQUIREMENTS <small>ERROR! BOOKMARK NOT DEFINED.</small>	
APPENDIX 3 – REFERENCE.....	21
APPENDIX 4 –APPLICABLE VERSIONS OF THE TEST STANDARDS	21

1. Introduction

Hong Kong ECO Mark is an independent certification program for recognizing “environmentally preferable” of product in Hong Kong.

This document aims to introduce certification requirements of Hong Kong ECO Mark on furniture including the product criteria, chemical test and factory inspection.

This Scheme has referenced ISO 14024:1999 - “Environmental Labels and Declaration – Guiding Principles” which is environmental label specification to introduce the criteria to be attainable, verifiable and transparency.

ISO 14024 is also required the criteria to be set that based on the environmental impact of product life cycle and environmental performance. Life cycle is including resource extraction, production, distribution, use and disposal.

2. Scope

Hong Kong ECO Mark accepts application from and is accessible to all applicants including manufacturers, importers, distributors and retailers, so long as the application falls within the scope of the scheme, which includes, but is not limited to, the following:

■ Desk	■ Tables
■ Chair	■ Cabinets
■ Book shelves	■ Beds
■ Wardrobes	■ Panels for Furniture
■ Mattress	

3. Certification Mode

The scheme adopts a “product-oriented” certification program. Applied products will be sent to be product chemical test to relevant testing standards. After complying with test requirements, HKCC will perform production site assessment. The aim of factory assessment is to ensure factory has good environmental management system able to manufacture the certified product steadily and production system complies with requirements.

Hong Kong ECO Mark is classified into 3 level of certification, Level 1, Level 2, Level 3. Hong Kong ECO Mark will be granted to approve product and Hong Kong ECO Mark license issued to relevant Subscriber after satisfactory results from chemical test and factory assessment are obtained.

Approved products and factories shall also be monitored by continual surveillance program, which it generally includes review inspection visit at factory and chemical test program. The mode of three level certifications is shown below:

Level 1: Initial Factory Audit + Chemical Test + Yearly Surveillance
(ISO/IEC Guide 67:2004-System 5)

Level 2: Chemical test only or report review
(1 year license)

Level 3: Chemical test only or report review
(For the applied lot only)

4. Certification – Pre-license Stage

4.1. Application to Hong Kong Certification Centre

The Subscriber submits completed Hong Kong ECO Mark application form with appendix (Code: F/001) together with following information to Hong Kong Certification Centre:

- A copy of Business Registration Certificate ;
- Photos/catalogues/pamphlets of the product(s) ;
- Product specification ;
- Raw materials list ;
- Certificate(s) of other Green Labels ;
- Flow chart of production process ;
- Exploded drawing (if necessary) ;
- User/Instruction manual.
- BOM

4.2. Product Criteria

If the material is larger than 10% by weight of the product, the material should be complied the following criteria and chemical test (Section 4.3):

4.2.1 Wood

The Source of wood for the furniture must meet ether a) or b) as below,

- a) The wood should be certified by Forest Stewardship Council or equivalent certification body;
- b) Non-certified sources of wood should have a traceable source to identify the wood doesn't come from protected forest environments. This statement shall be supported by declaration letter or equivalent documents.

Wood used in the furniture product must not treated with fungicides or insecticides that are classified by the World Health Organisation (WHO) as type 1A (extremely hazardous pesticides) or type 1B (highly hazardous pesticides).

Biocides are included in Annex IA to Directive 98/8/EC of the European Parliament and of the Council is authorized to use in furniture.

Assessment and verification: The subscriber shall provide the declaration letter (F/G/002 & F/G/003) for the requirement. For the chemical product used in furniture should provide Material Safety Data Sheet, Chemical list or equivalent documentation that present the information on health hazard classification.

4.2.2. Metal

The metal used in applied product should be complied the criteria as below,

- a) The metal should not greater than 80% by weight of the product;
- b) The recycling ratio should greater than 90% by weight of the product. This statement shall be supported by declaration letter and provide the information for recycling the metal;

- c) The recycling part of metal must be possible to separate from other materials in the product without the use of special tools. This statement does not apply to metals used in surface treatment.

Assessment and verification: The subscriber shall provide the declaration letter (F/G/002) for the requirement.

4.2.3. Plastic

Plastic included in product should be complied the criteria as below,

- a) Plastic parts in the product shall be provided information with the type of plastics.
- b) Plastic parts that are recyclable or reusable must be separated from other materials in furniture without using special tools.
- c) Plastic parts must not be treated and coated in a way that would prevent recycling or reuse.
- d) Information shall be provided by documents as below,
 - (i) The percentages by weight of recycled and virgin PVC. Virgin PVC shall not greater than 50% by weight of the product;
 - (ii) Information on any Environment Management System (EMS) for the production process;
 - (iii) Resin identification Code is required on the surface of the plastic part;
 - (iv) Information on waste disposal, wastewater treatment and emissions to air;
 - (v) The types of stabilizer used;
 - (vi) The types of any phthalate plasticizers present in the plastic.

Assessment and verification: The subscriber shall provide the declaration letter (F/G/002), product description table and chemical list for the requirement. For the chemical product used in furniture should provide Material Safety Data Sheet or equivalent documentation that

present the information on health hazard classification.

4.2.4. Textiles and Leather

Textile and Leather should be complied the chemical criteria in section 4.3.

4.2.5. Glass

Glass parts of the furniture must be able to easily replace and complied the chemical criteria in section 4.3.

4.2.6. Customer Information

The product shall be provided the information in instruction guide as below,

- Information on the fitness for purpose, on basis of domestic or contract use (i.e. light or heavy, indoor or outdoor use);
- Information on cleaning and care;
- Instruction for the replacement of glass;
- Instruction of assembly.

4.3. Chemical Criteria

4.3.1. Classification of Certification Product

- (a) **Individual model:** Applicants shall arrange to send applied samples to HKCC. Chemical test will be conducted for submitted individual samples.
- (b) **Models in series:** If Subscriber has more than one model for application, and such models have similar structures, functions or components, the representative samples from all applying models shall be selected for chemical test. The other models will be selected for conducting the additional test or verification in respect of the differences.

4.3.2. Sample preparation

Subscribers should submit samples to HKCC. The quantity of samples shall be according to Certification proposal (F/G001). All submitted samples must be completed good functional and all critical components of applied product shall comply with the relevant requirement mentioned in section 4.3.4.

4.3.3. Applicable Testing Standards

The applicable versions of the test standards shall refer to Appendix 4. Chemical tests will be conducted according to the test standards and versions to ascertain that the products seeking Hong Kong ECO Mark are in compliance with the rules and regulations of the scheme. HKCC will also consider to accept, entirely at its own discretion, test reports which are issued prior to the application for Hong Kong ECO Mark as fully satisfying the chemical test requirements.

4.3.4. Hazardous substance

The product that applies this Hong Kong ECO Mark should be complied with the chemical criteria as following:

- a) Any of the following risk phrases shall not be added to the furniture product or used in the manufacturing process:
- R23 (Toxic by inhalation),
 - R24 (toxic in contact with skin),
 - R25 (toxic if swallowed),
 - R26 (very toxic by inhalation),
 - R27 (very toxic in contact with skin),
 - R28 (very toxic if swallowed),
 - R39 (danger of very serious irreversible effects),
 - R40 (limited evidence of a carcinogenic effect),
 - R42 (may cause sensitization by inhalation),
 - R43 (may cause sensitization by skin contact),
 - R45 (may cause cancer),
 - R46 (may cause heritable genetic damage),
 - R48 (danger or serious damage to health by prolonged exposure),
 - R49 (may cause cancer by inhalation),
 - R50 (very toxic to aquatic organisms),
 - R51 (toxic to aquatic organisms),

- R52 (harmful to aquatic organisms),
- R53 (may cause long-term adverse effects in the aquatic environment),
- R60 (may impair fertility)
- R61 (may cause harm to the unborn child),
- R62 (possible risk of impaired fertility),
- R63 (possible risk of harm to the unborn child),
- R68 (possible risk of irreversible effects),

as laid down in Council Directive 67/548/EEC of 27 June 1967 on the approximation of laws, regulations and administrative provisions relating to the classification, packaging and labeling of dangerous substances and also consider Council Directive 1999/45/EC

Alternatively, classification may be considered according to Regulation (EC) No 1272/2008 of the European parliament and of the council of 16 December 2008 on classification, labelling and packaging of substances and mixtures, amending and repealing Directives 67/548/EEC and 1999/45/EC, and amending Regulation (EC) No 1907/2006.

Assessment and verification: The subscriber shall provide the declaration letter (F/G/003) for the requirement. For the chemical product used in furniture should provide Material Safety Data Sheet, Chemical list or equivalent documentation that present the information on health hazard classification.

- b) Flame retardant substances as below shall not be used in the production of furniture,
- R40 (limited evidence of a carcinogenic effect),
 - R45 (may cause cancer),
 - R46 (may cause heritable genetic damage),
 - R49 (may cause cancer by inhalation),
 - R50 (very toxic to aquatic organisms),
 - R51 (toxic to aquatic organisms),
 - R52 (harmful to aquatic organisms),
 - R53 (may cause long-term adverse effects in the aquatic environment),
 - R60 (may impair fertility)
 - R61 (may cause harm to the unborn child),
 - R62 (possible risk of impaired fertility),
 - R63 (possible risk of harm to the unborn child),
 - R68 (possible risk of irreversible effects),

as laid down in Council Directive 67/548/EEC of 27 June 1967 on the approximation of laws,

regulations and administrative provisions relating to the classification, packaging and labeling of dangerous substances and also consider Council Directive 1999/45/EC.

Assessment and verification: The subscriber shall provide the declaration letter (F/G/003) for the requirement. For the chemical product used in furniture should provide Material Safety Data Sheet, Chemical list or equivalent documentation that present the information on health hazard classification.

- c) The product shall not use the following flame retardant:
 - i) Polybrominated biphenyls, PBBs
 - ii) Polybrominated diphenylethers, PBDEs

- d) The product shall not use the following substances as well as pigment, additives, padding materials and plastic:
 - Heavy metal: Lead, Cadmium, Mercury, Chromium, Arsenic, Antimony (except Lead and Cadmium in Coating: Lead < 0.01% by mass & Cadmium < 0.1% by mass)
 - Organotin compounds
 - CFC, HCFC, HFC & methylene chloride
 - Pentachlorophenol (PCP)
 - Polycyclic aromatic hydrocarbons (PAHs)
 - Polychlorinated biphenyl (PCB)

- e) Paint or Foam in the product shall not contain the concentration of 1,3-butadiene greater than 0.05%(%w/w).

- f) Plastic in the product shall not contain the following hazardous substances:
 - i) Dibutyl phthalate (DBP);
 - ii) Benzyl butyl phthalate (BBP);
 - iii) Bis(2-ethylhexyl) phthalate (DEHP);
 - iv) Dioctyl phthalate (DnOP);
 - v) Di-isononyl phthalate (DINP);
 - vi) Di-isodecyl phthalate (DIDP).

- g) Formaldehyde in the furniture shall be classified in E1 class (<0.124mg/m³ & 3.5mg/m²h). The classification is according to EN13986:2004.

- e) TVOCs in the furniture shall not be greater than 0.5mg/m³.

f) Fabrics shall not contain the prohibited substances as following:

i) Alkylphenoethoxylates (APEOs)

ii) AZO Dyes as below,

Compound Names	CAS No.
■ 4-aminodiphenyl	(92-67-1)
■ Benzidine	(92-87-5)
■ 4-chloro-o-toluidine	(95-69-2)
■ 2-naphthylamine	(91-59-8)
■ O-amino-azotoluene	(97-56-3)
■ 2-amino-4-nitrotoluene	(99-55-8)
■ P-chloroaniline	(106-47-8)
■ 2,4-diaminoanisol	(615-05-4)
■ 4,4'-diaminodiphenylmethane	(101-77-4)
■ 3,3'-dichlorobenzidine	(91-94-1)
■ 3,3'-dimethoxybenzidine	(119-90-4)
■ 3,3'-dimethylbenzidine	(119-93-7)
■ 3,3'-dimethyl-4,4'-diaminodiphenylmethane	(838-88-0)
■ P-cresidine	(120-71-8)
■ 4,4'-methylene-bis-(2-chloraniline)	(101-14-4)
■ 4,4'-oxydianiline	(101-80-4)
■ 4,4'-thiodianiline	(139-65-1)
■ O-toluidine	(95-53-4)
■ 2,4-diaminotoluene	(95-80-7)
■ 2,4,5-trimethylaniline	(137-17-7)
■ 4-aminoazobenzene	(60-09-3)
■ O-anisidine	(90-04-0)
■ 2,4-Xylidine	(87-62-7)
■ 2,6-Xylidine	(95-68-1)

iii) Disperse & Carcinogenic Dyes as below,

Compound Names
■ C.I. Basic Red 9
■ C.I. Disperse Blue 1
■ C.I. Acid Red 26
■ C.I. Basic Violet 14
■ C.I. Disperse Orange 11
■ C.I. Direct Black 38
■ C.I. Direct Blue 6

- C.I. Direct Blue 28
- C.I. Direct Red 28
- C.I. Disperse Yellow 3

iv) Perfluorooctane sulfonates / Perfluorooctanoic acid (PFOS/PFOA)

Assessment and verification: The subscriber shall provide the declaration letter (F/G/003) or report issued from Accredited Laboratories from HOKLAS. For the chemical product used in furniture should provide Material Safety Data Sheet, Chemical list or equivalent documentation that present the information on health hazard classification. If the restricted chemicals are used, the concentration of restricted chemical should comply with the related regulations and assessment by certification officer.

4.4. Initial Factory Evaluation

4.4.1. Factory Inspection – Environmental Aspect Inspection

Factory inspection is to ensure Subscriber of certified product has an ability to produce such product and to ensure product are complying with the relevant international requirements which including critical environmental impact, management review and equipment. The criteria of Hong Kong ECO Mark shall also be introduced to Subscribers, which basically include:

- Factory situation complies with information stated in Factory Questionnaire, which is reported to HKCC upon application being made;
- Hong Kong ECO Mark is granted only to products certified by HKCC;
- Current Hong Kong ECO Mark production complies with appropriate requirements;
- Maintenance and Calibration records shall be documented;
- Environmental management system shall be implemented;
- Documents control and environmental records are maintained;
- Review on critical environmental impact, corrective action;
- Waste management shall be implemented especially in waste water.

The requirements of factory inspection shall be referred to in the Appendix 2

4.4.2. Product Consistency Check

If any certified product is available in production line or warehouse, inspector shall select sample for the component checking against the description of Certification report. Any

difference between inspected sample(s) and description of HKCC certification report should be recorded in Factory Inspection Report. For example, the materials that certified will be checked.

The following marking must be indicated on the Hong Kong ECO Mark certified product, except the description on the relevant Certification Report:

- (i) Subscriber identification (Subscriber's name, trademark and / or Hong Kong ECO Mark license number) and Hong Kong ECO Mark logo.
- (ii) Model designation or equivalent.
- (iii) Serial number or date code traceable to month and year of manufacture.
- (iv) Instruction manual – all markings or label containing warning or caution words or phrases given in respect of the safe keeping, use consumption or disposal of the good will have to appear in both English and Chinese.

4.5. Overall Review

Overall assessment review will be performed by HKCC after completion of product chemical test and factory inspection. During the review, the following reports/records will be taken into consideration:

- Information stated in the Application Form
- Chemical test result
- Result of factory inspection
- Other submitted information/reports/records/certificates for corrective actions found in certification process.

4.6. Issue of Hong Kong ECO Mark License

Hong Kong ECO Mark could be granted to Subscribers when satisfactory result of overall review assessment is obtained. Subscribers are permitted to Hong Kong ECO Mark onto certified products.

The license includes the following information:

- License number
- Date of issue
- Information about Subscriber
- Certificate product information, i.e. product type, model number
- Applicable standard (s)
- Expiry date of certification

4.7. Continual Surveillance

4.7.1. Routine Inspection Visit

Routine Factory Inspection is conducted on Subscriber's manufacturing facilities once per year by HKCC or appointed inspection party. The requirements of factory inspection shall refer to Appendix 2.

5. Product Modification

The Subscriber should inform HKCC of any intended modification on any Certified Product. Whenever Subscriber requests to modify a Certified Product, Subscriber should submit a "Modification Request", which is obtainable from HKCC.

HKCC will evaluate the submitted information from the Subscriber and to make sure that the following information is clearly stated in the form and / or other records submitted:

- Relevant License Number;
- Proposed type / model of product to be modified;
- Reason(s) for modification;
- Proposed effective date of modification;
- Modification details, which include, but are not limited to, the following:
 - Parts list;
 - Raw material list including chemicals;
 - BOM & exploded drawings;
 - Assembly drawings;
 - User manual / Instructions.

During the course of application review, HKCC will determine whether sample testing on the modified product is required. If the modification is related to new components that have environmental aspect, the modified product should undergo the sample testing process.

6. Product Scope Extension

Subscriber should apply to HKCC for amendment about certification. HKCC will check whether the submitted application can be processed by reviewing various relevant aspects. If the application cannot be further processed after the review, the Subscriber will be informed.

If the application can be processed, HKCC will inform the Subscriber in writing. In addition, the Subscriber will be advised of the detailed certification and surveillance plan for the product and the fees schedule for different stages.

“Endorsement” will be prepared and issued by the HKCC to the Subscriber for the additional types or models of the products.

Whenever the amendment involves an additional factory to produce the same or different types or models of products, it comes to the conclusion that a full assessment procedure should be followed. That is, assessment starting from sample testing, and then submitting factory questionnaire, and finally, factory inspection.

Another new Hong Kong ECO Mark License will be issued upon complete fulfillment of the assessment requirements for certification. A new License Number will be assigned accordingly.

Details of the certification and surveillance plan for the amendment and the fees schedule for the assessment incurred should be clearly stated in the Certification Proposal after a conclusion has been made. The Subscriber will be informed of the detailed plan in a Certification Proposal.

7. Certification Suspension/ Cancellation

The situations in which suspension may be initiated shall include, but not be limited to, the following:

(a) Voluntary suspension is self-initiated by the Subscriber and is non-disciplinary in nature.

The Subscriber may, by written notice, voluntarily suspend its certification for any or all of the products for which it holds certification.

(b) Delay of payment: When any payment becomes overdue by 2 months, HKCC may send a letter to the Subscriber warning of the possibility of suspension of certification.

(c) Delay of Routine Inspection Visit (RIV): When the scheduled RIV has been overdue by 3 months, the HKCC will send a letter to the Subscriber warning of the possibility of suspension of certification.

(d) Other Matters

- The surveillance shows non-compliance with the Requirements of a serious nature but immediate withdrawal is not necessary;
- Serious customer complaints;
- Contravention of the rules of the Scheme or the procedures of HKCC;
- Misuse of the Mark or the License, e.g. misleading prints or advertisement not solved by suitable retraction or appropriate remedial measures by the Subscriber;
- Reported incidence from the public.

The Suspension can only last for a maximum of 2 years, or the period specified in the Suspended Notification Letter.

The Subscriber can initiate resumption of certification by a written request to HKCC within the allowable suspension period specified in the Suspension Notification Letter. After the receipt of the Subscriber's request, HKCC will evaluate whether the Subscriber has fulfilled the resumption conditions as indicated in the Suspension Notification Letter.

The circumstances in which cancellation of certification will be initiated include, but are not limited to, the following:

- (a) If the surveillance visit shows that the non-compliance is of a serious nature;
- (b) If there is any serious contravention to the rules of Hong Kong ECO Mark Certification;
- (c) If inadequate corrective measures are taken by the Subscriber in the case of suspension;

If a Subscriber desires to cancel the Certification, the Subscriber should notify HKCC in writing stating the proposed date for terminating the Hong Kong ECO Mark Certification.

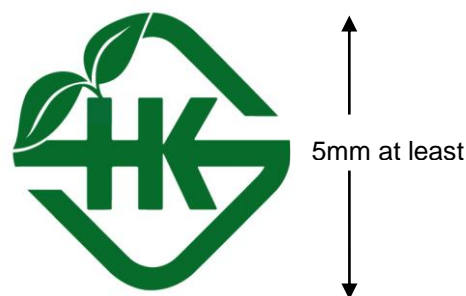
Resumption of Certification will go through the normal application and assessment procedures. A new License number will be issued on successful completion of certification.

8. Regulations for Certification Mark

The use of Hong Kong ECO Mark License and Hong Kong ECO Mark is subject to certain conditions as outlined below:

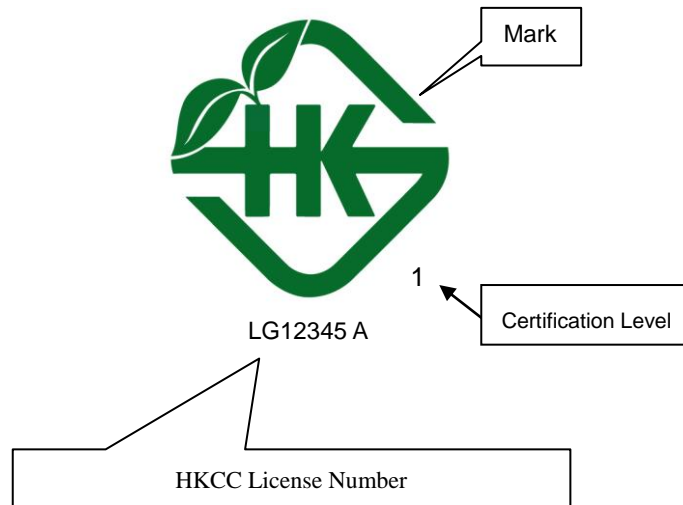
The Hong Kong ECO Mark and the License are the properties of the Hong Kong Certification Centre. HKCC has full control over the use and display of License and the Mark. Subscriber authorized to use the Mark and License shall ensure that they are used in accordance with the rules and requirements laid down in this document.

When certification of the product has been authorized there shall be a marking to indicate compliance with the Hong Kong Certification Centre's requirements in the form outlined below. Under no circumstances should a product bearing the Hong Kong ECO Mark be released to the market prior to authorize certification.



Hong Kong ECO Mark may appear in any size provided it is not less than 5mm in height. The Mark can be enlarged or reduced with its aspect ratio remaining unchanged. Where limitations of space prevent the use of the Mark in the minimum size (i.e. 5mm in height), requests to use a Mark of smaller dimensions will be considered by HKCC on the basis of legibility. Hong Kong ECO Mark on any Certified Product will be identified with the holder of the License.

Hong Kong ECO Mark shall be marked together with License Number* & Certification Level. It should be placed adjacent to the model's identity as far as possible.



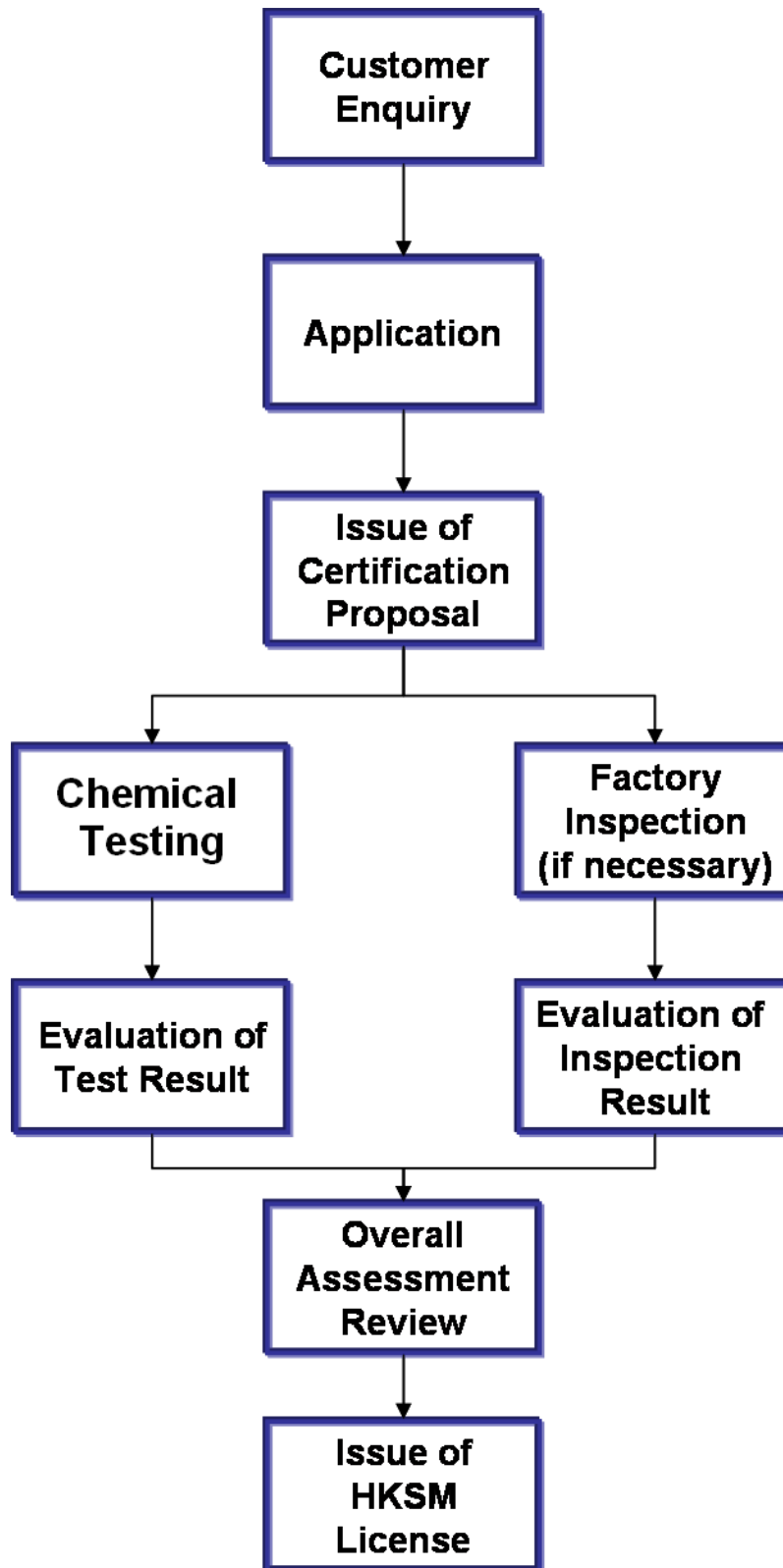
*The License Number shall be mark in the Hong Kong ECO Mark.

Where Hong Kong ECO Mark is permitted to appear on a product by a separate marking medium, HKCC License Number shall be included in the design of the separate marking medium.

Hong Kong ECO Mark should be applied in such a way that is easily visible, clear, legible, and reliable and prevents it from deterioration. Hong Kong ECO Mark may only be applied at factory locations or other sites, as specified and approved by HKCC.

- End of Certification Scheme -

Appendix 1 – Pre-License Overview Work Flow



Appendix 2 – Factory Inspection Requirements

This guideline provides the basic acceptable standard. Where considered necessary by HKCC, additional requirements/ tests shall be specified.

1. Purchased Material

Manufacturers must ensure that all purchased materials and services conform to specified requirements.

2. Incoming Goods Inspection System

The manufacturer must have adequate facilities for checking, receiving and storing incoming goods including national resources and chemicals. Incoming chemicals shall comply with the criteria of Hong Kong ECO Mark by providing the material safety data sheet.

If manufacturer relies on Certificates of Conformity to underwrite the quality of incoming goods, such Certificates must clearly identify the products to which they refer, the quantity of items covered the relevant specification with which the goods comply.

3. Environmental Operation control

Production of applied product shall be inspected at appropriate stages to ensure as low as possible for environmental impact in production line of the applied product. Subscriber shall evaluate the waste management process in the assessment. Our scheme is appreciated the subscriber should monitor the wastewater discharge, air emission from production including biological and chemical oxygen demand, temperature and acidity.

The manufacturer shall fully document, and maintain up to date, the complete schedule of tests and inspections to be carried out on each product. The records of all inspections and quality checks shall be monitored and the results, including any trends, shall be regularly reported to production control.

4. Training & Review on environmental aspect

Training needs are identified and actions are taken to the staff that works with significant environmental impact. All training is recorded in documents. In production of applied product, the significant impact on environment shall identify and review. Subscriber shall also review and correct the nonconformity (ies) in order to mitigate their environmental impacts.

5. Factory Routine Test

Inspector shall witness relevant factory tests to be carried out on production items, by the manufacturer, in order to establish that the certified products continue to maintain the quality.

Manufacturer may perform the tests at an appropriate stage during production, and normally carried out on the complete products. All records related to factory tests shall be maintained, including the type and results of the tests, non-conforming products handling.

6. Test Equipment

The equipment used for testing on the production line or by the quality control or quality audit departments, must be routinely checked and calibrated for correct operation. All calibrations undertaken on such equipment must be traceable to national or other recognized standards. Records of calibrations and routinely checked undertaken for each instrument must be kept. If check test proves unsatisfactory, the result should be recorded with any corrective action taken.

6. Records

The manufacturer must maintain appropriate records, for a minimum period of between two inspection visits, to substantiate conformance with specified requirements in a legible and identifiable. Such records should include the following:

- Incoming Goods record including MSDS;
- In-process environmental control;
- Certificates of Conformity;
- Review meeting minutes or equivalent;
- Testing standards for quality control;
- Operator training;
- Routine tests, including results of BOD, COD on wastewater;
- Calibration information.

7. Handling and storage

Inspector shall check the condition of storage of components, semi-assemblies and finished products. All of these must be handled and stored to avoid damage and in such a way as to

ensure continued compliance with applicable standards. Incoming resources that is classified in recycled, certified and non-certified should be separated clearly in storage room.

8. Customer complaints

Manufacturer should record all customer complaints related to Hong Kong ECO Mark product. The description and cause of complaint, the corrective action taken by subscriber and the result of handling should be recorded. Inspector also should record any serious nature in the Factory Inspection Report.

9. Consumption of Green ECO Mark

Subscriber should be advised to keep a production record during Initial Factory Evaluation (IFE) inspection. Inspector should check the production record and quantity in every visit and record details on inspection report. It should include the following:

- (i) How many quantities have been produced since the last visit?
- (ii) How many quantities have been produced since the last visit to December 31?

Appendix 3 – Reference

[1] ISO 14024:1999, *Environmental labels and declarations – type 1 environmental labeling – Principles and procedures*

[2] ISO 14001:2004, *Environmental management systems – Requirements with guidance for use*

[3] Green Council – *Hong Kong Hong Kong ECO Mark Scheme*

[4] Environmental Performance Standard of Good Environmental Choice Australia – *Furniture and Fittings (GECA 28-2010 v2)*

[5] The New Zealand Ecolabelling Trust – *Licence Criteria for Furniture and Fittings (EC-32-11)*

[6] Commission Decision of 30 November 2009 on establishing the ecological criteria for the award of the community eco-label for wooden furniture

Appendix 4

New Standard / Amendment Issued		-6	-5	-4	-3	-2	-1	1	2	3	4	5	6	7	8	9	10	11	12	13	14	15	16	17	18	19	20	21	22	23	24	25	26	27	28	29	30	31	32	33	34	35	36	37	38	39	40	41	42	42	44	45	46	47	48	49	50	51	52	53	54
Application for Certification to Outdated Standard (Need type tests)		ACCEPT																								NOT ACCEPT																																			
Application for Certification to Outdated Standard (Verification only)		ACCEPT																																				NOT ACCEPT																							
Application for Certification to New Standard		ACCEPT																																																											
Issue Licence for Outdated Standard		ALLOW																																																NOT ALLOW											

Explanation:

When new version or amendment of the standard is issued, then:

1. After 24 months, application for certification to outdated standard which needs type test will not be accepted.
2. After 36 months, application for certification to outdated standard which needs report verification will not be accepted.